



RSP Inline Finishing System



Advancing through technology

scoring

die cutting

perforating

Past



Present

Unbelievable - Finishing directly on the printing press

- Precise
- Safe
- Fast
- Reusable
- Successful worldwide



Print Craft Supply, LLC



RSP Inline Finishing System



Ready to go in 10 - 25 minutes (depending upon machine type)

RSP Inline Finishing System temporarily transforms your printing press into a finishing machine easily and cost-effectively. Perforating, die cutting and scoring inline with no additional machine, or labor costs. Experienced RSP technicians provide full training for your staff on the system.

System Contents

1 RSP Base Plate	1 Side Cutter
1 RSP Mylar Grid	1 Packet RSP Supporting Foam
4 RSP Protective Impression Cylinder Jackets	1 Packet RSP Perforating Rules
1 Hexagon Socket Wrench	1 Roll Adhesive Tape
	1 Operating Manual, CD, Video
	1 System Case

Available for the following sheetfed offset printing presses:

HEIDELBERG GTO 46	HEIDELBERG SORM
HEIDELBERG GTO 52	HEIDELBERG SORMZ
HEIDELBERG SM 52	HEIDELBERG SM 72
HEIDELBERG MO	HEIDELBERG SO 74
HEIDELBERG SM 74	HEIDELBERG SORD
HEIDELBERG PM 74	HEIDELBERG SORDZ
HEIDELBERG CD 74	HEIDELBERG SO 102
HEIDELBERG SORS	HEIDELBERG SM 102
HEIDELBERG SORSZ	HEIDELBERG CD 102

KOMORI L 20	KOMORI L 40
KOMORI L 26	KOMORI Sprint 26
KOMORI L 28	KOMORI Sprint 28

MAN ROLAND 300
MAN ROLAND 500
MAN ROLAND 700

(Man Roland System equipped with Master Grid Plate)

MITSUBISHI DIAMOND 1000 Coater

Letterpress Quality - Inline at full speed!



RSP mylar grid with millimeter scale

- adjusted to the individual cylinder diameter for pre-makeready of the RSP form outside the press
- RSP forms can be reutilized

RSP protective impression cylinder jacket

- self-adhesive; for the protection of the impression cylinder during the cutting and perforating process

RSP processing rules

- for scoring, cutting and perforating; height-adjusted and designed for the RSP Inline Finishing System

RSP supporting foam

- for keeping the printed sheet true to register in free areas (parallel to the cylinder axle)
- applicable in the trim area in order to safeguard the plane position of the printed sheet
- self-adhesive

RSP offset creasing strips

- for scoring in letterpress quality
- available in Standard and Off-center
- various dimensions for different paper/board qualities

RSP adhesive tape

- for securing the etched dies on the RSP mylar grid

RSP Offset Creasing Rules Standard ORS

part no.	dimensions	# strips
ORS0208	0.2 x 0.8 mm	30
ORS0210	0.2 x 1.0 mm	30
ORS0307	0.3 x 0.7 mm	30
ORS0308	0.3 x 0.8 mm	30
ORS0310	0.3 x 1.0 mm	30
ORS0312	0.3 x 1.2 mm	30
ORS0313	0.3 x 1.3 mm	30

RSP Offset Creasing Rules Off-Center OCC

OCC0310	0.3 x 1.0 mm	30
OCC0312	0.3 x 1.2 mm	30
OCC0313	0.3 x 1.3 mm	30

RSP Processing Rules

part no.	description	footage
PRPerf08	Perf 8 tpi	20
PRPerf12	Perf 12 tpi	20
PRPerf16	Perf 16 tpi	20
PRPerf35	Perf 35 tpi	20
PRPerf50	Perf 50 tpi	20
PRCut	Cut	20
PRCreaseR1	Crease R1	20
PRCreaseR2	Crease R2	20

supporting foam



creasing strips

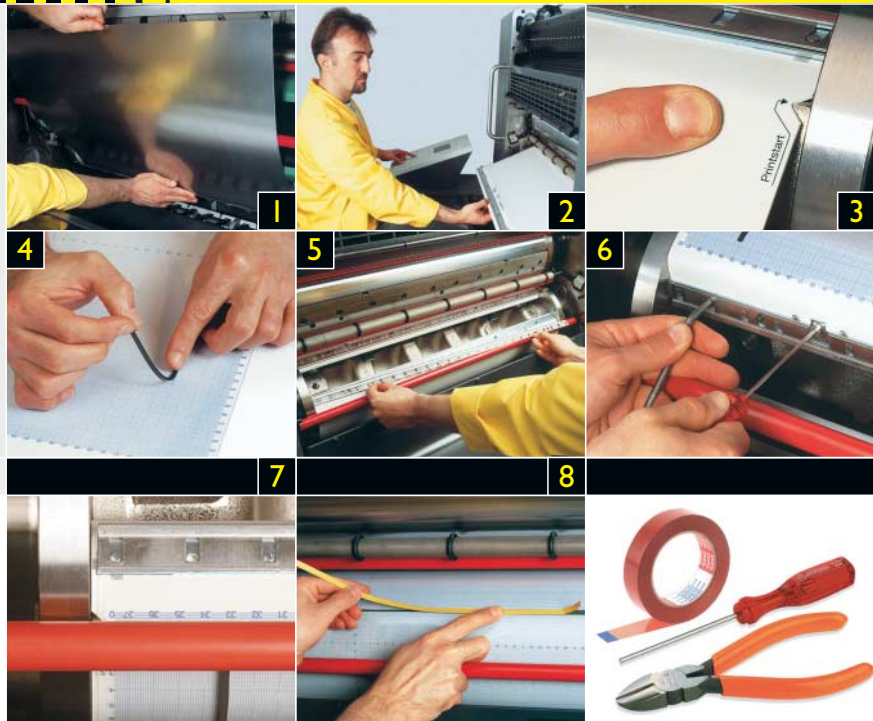


adhesive tape



Print Craft Supply, LLC

RSP Inline Finishing System



Mount ... Adjust ... Go!

Lower costs, higher profit, satisfied customers

1. Mounting the RSP impression cylinder jacket on to impression cylinder
2. Clamping of the RSP base plate on to the blanket cylinder
3. Adjustment of the RSP base plate to printstart
4. Preparation of the RSP mylar grid outside the press
5. Register true clamping of the RSP mylar grid on the pin bar and fixing it with the locking bar
6. Mounting the RSP mylar grid on the RSP base plate
7. Readjustment in horizontal, vertical and diagonal direction inside the press
8. Application of the RSP offset creasing strips

See a demonstration video on our website: www.printcraftsupply.com!

Print Craft Supply, LLC
 210 Curie Drive
 Alpharetta, GA 30005
 800-480-2486 phone
 770-667-3313 fax
www.printcraftsupply.com

